



WAUPACA COUNTY
 LAND INFORMATION OFFICE
 811 HARDING ST., P.O. BOX 663
 WAUPACA, WI 54981

Ian Grasshoff
 Land Information Officer
 Phone: 715-258-6496
 Fax: 715-258-6212

Map Production Charges for the Public

- **Large Format Custom Maps (Greater than 11" x 17") Printed on OCE TCS300 Plotter**
All prices based on premium color bond paper. Glossy photo paper is extra.

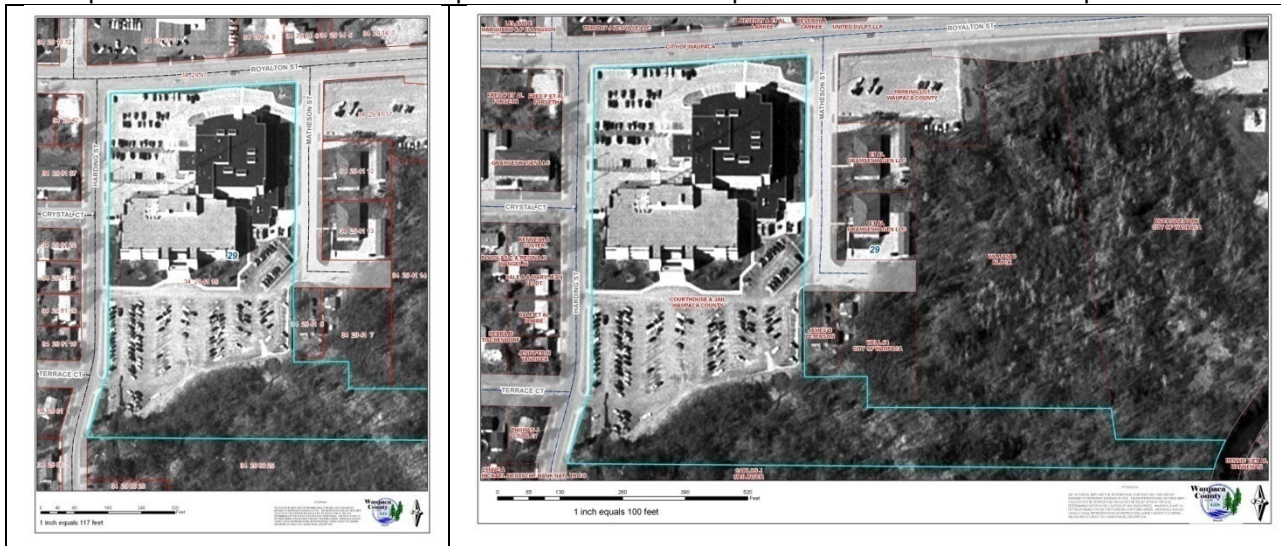
A processing fee of \$15 per half (minimum charge of half hour) will be applied for any maps other than the standard parcel or zoning products as identified below (Figure 2). Map processing fees will only be applied once for each map project request. Additional copies will be billed by the square footage. Depending on the project, please allow up to one week for processing time.

- Maps **without Aerial Photography**
 - **\$3 square foot plus processing fee (\$15 minimum)**
 - Ex. 24" x 36" map with half hour of labor: \$33 for first copy, \$18 for each additional copy.
- Maps **with Aerial Photography**
 - **\$5 square foot plus processing fee (\$15 minimum)**
 - Ex. 24" x 36" map with half hour of labor: \$45 for first copy, \$30 for each additional copy.
- **Standard Maps**
 - Aerial Photos (11" x 17" or smaller): includes changing map extents and selecting parcels
 - **8.5" x 11" : \$2.00**
 - **11" x 17" : \$3.00**

Figure 1

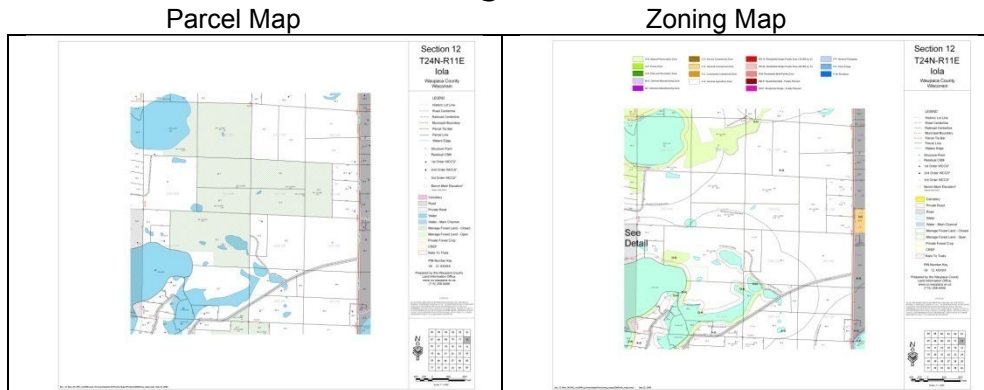
Example: 8.5" x 11" Aerial Photo Map

Example: 11" x 17" Aerial Photo Map



- Parcel or Zoning Maps (22" x 28.5"): **\$1.00 per page**

Figure 2



- **Specialty Maps**

- County Road Map with Road Location Index
 - **36" x 40" Map with a 62 page index: \$50**
- Emergency Services Atlas (atlas and index of all rural address in Waupaca County)
 - **131 pages at 8.5" x 11" plus about 20 index pages: \$40**

- **Laser Color Prints (anything other than standard maps from above)**

A processing fee of \$15 per half (minimum charge of half hour) will be applied for any maps other than the standard aerial photos (see Figure 1), parcel maps (see Figure 1), and zoning maps (see Figure 2) products. Map processing fees will only be applied once for each map project request. Additional copies will be billed by the paper size. Depending on the project, please allow up to one week for processing time.

- **8.5" x 11" : \$2.00 + processing if not standard**
- **11" x 17" : \$3.00 + processing if not standard**

*Please Note: The Land Information Office holds the right to adjust this pricing schedule without prior notice.